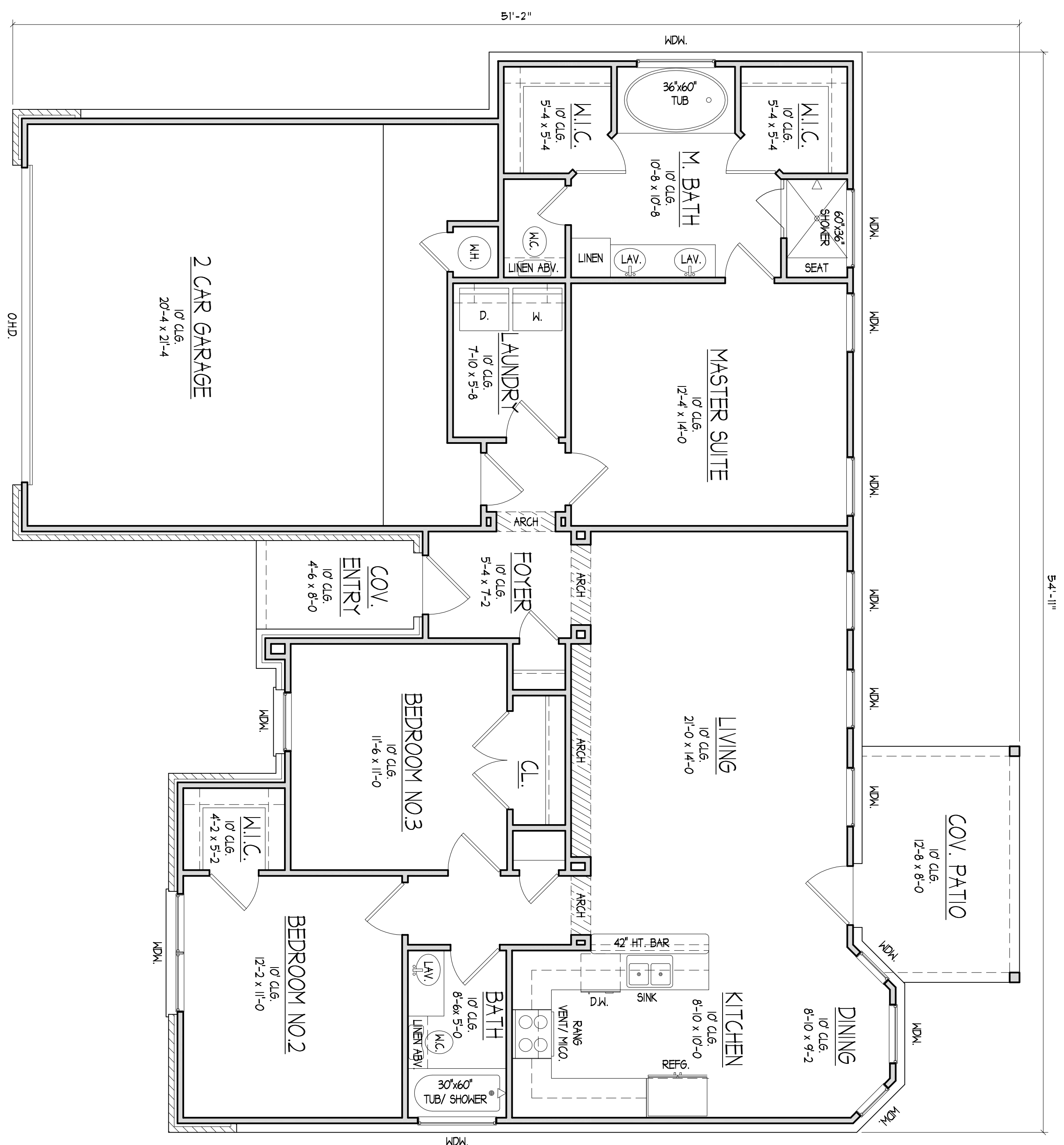


**FLOOR PLAN**



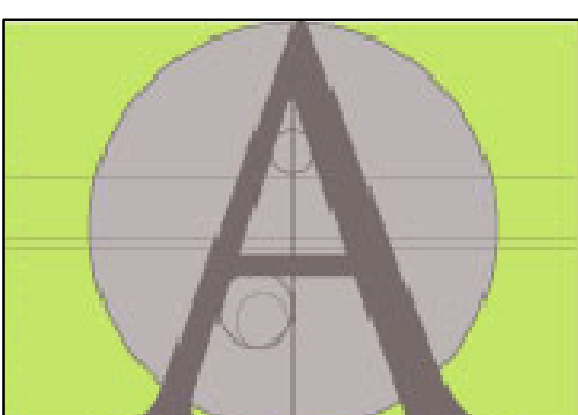
BUILDING AREA DATA:	
LIVING:	1,406 SQ. FT.
FRONT COVERED PATIO:	36 SQ. FT.
REAR COVERED DECK:	94 SQ. FT.
GARAGE:	475 SQ. FT.
TOTAL COVERED/ UNCOVERED FLOOR AREA:	2,011 SQ. FT.



896 SAINT DELIGHT RD., PAIGE, TX 78659  
PHONE: (512) 507-4027 WWW.PD-D.COM

PROJECT NO: 363  
DESIGN BY: RP  
DATE: 04/15/2013  
This floor plan is being shown with the architectural design and building concepts as an illustration only. It is not intended to be used for construction purposes. All dimensions are subject to change without notice. © PD&D

**THE ASTOR**  
1406 sq. ft.



87 Loop 150 W.  
Bastrop, TX 78602  
PHONE: (512) 589.3523  
www.acadianhomestexas.com

**ACADIAN HOMES**  
WE HAVE A PASSION FOR QUALITY, AFFORDABLE, ENERGY-EFFICIENT TEXAS CUSTOM HOMES